

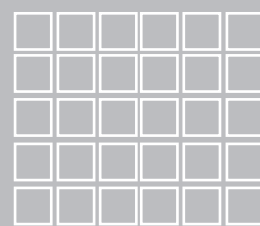
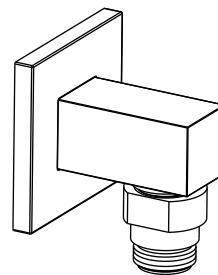
To ensure that your installation proceeds smoothly,
please read this instructions carefully before you begin.

DESTOCK



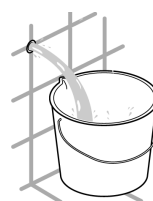
DESIGN

Installation & Operation Instruction



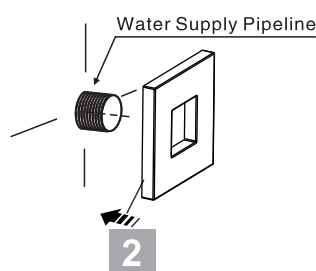
Installation & Operation Instruction

Installation

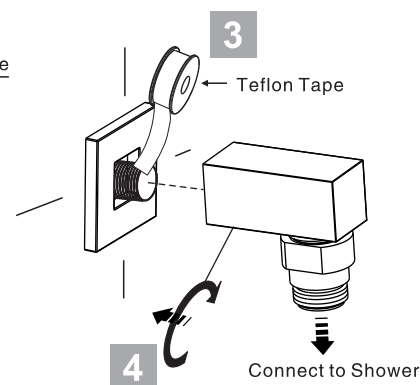


1

- * Consult the dimension drawing and lay the pipes.
- * Wash and clean the water supply pipeline.



2



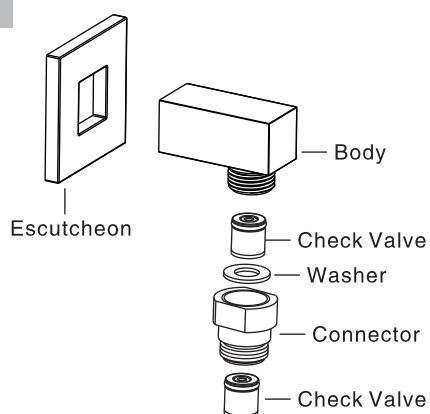
3

Teflon Tape

4

Connect to Shower

Parts List



Notice

Remove all impurity in pipes before beginning to avoid clogging.
When you repair the faucet you will need to shut off hot/cold water supply by closing the water supply.

Conditions for use

- * Water pressure condition: 0.1MPa~0.75MPa
- * Environment Temperature: 1°C~55°C
- * Not for use as a steam outlet.

Cleaning the surface

- * Rinse the product with clean water.
- * Dry with soft cotton flannel cloth.
- * Do not clean the product with acid, polish, abrasives, harsh cleaners, or cloth with a harsh surface as these products may damage the finish.