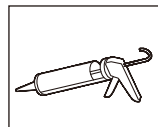
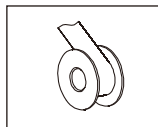
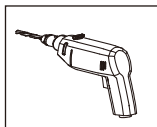
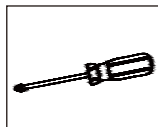
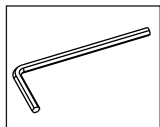
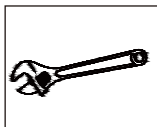


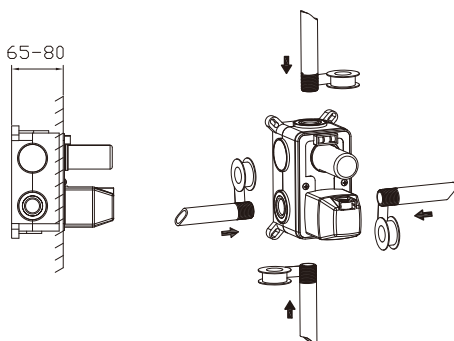
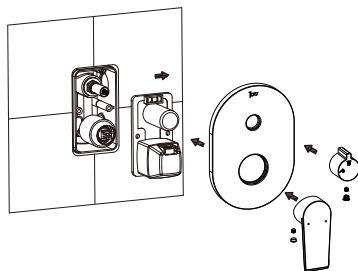
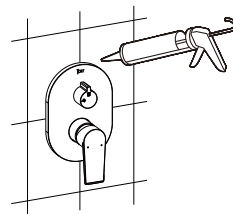
# Notice d'installation

**BUILT-IN STICK SHOWER**

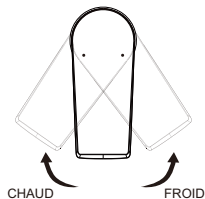
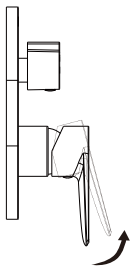
## Outils



## Étapes d'installation


**1**

**2**

**3**

## méthode d'utilisation



## Conditions d'utilisation

1. Pression d'alimentation en eau froide/eau chaude : 0,05-1,0Mpa (0,5-10Kgf/cm).
2. La température ambiante doit être supérieure à 0°C.
3. Température d'alimentation en eau  $\leq 90^{\circ}\text{C}$ .
4. Le couple au niveau de l'écrou de connexion ne peut pas être supérieur à 10 Nm